



# The Willow Creek Gazette

Willow Creek Railroad Museum

Spring 2015

## Signaling System Expanded

Willow Creek Railroad's signal system is continuing to expand!

Beginning with three signals installed in 2002 to control the 3-way crossing, Willow Creek's signal system has expanded to twelve signals and four crossing signals. They extend from the 3-way crossing through the Campers Crossing area and around the curves at the west end.

Two impressive signal bridges designed by Tarno Coleman and fabricated by Mike Meyers and the Chemeketa Community

College welding class have been installed at the west end. Besides adding interest to the railroad, these have enabled signals to be added for the center track.

Centralized controls have been installed at the ICP to turn the signal system on and off, and to silence the crossing bells and turn on the station lighting and semaphore lamps at night. Work has begun on nine new signals extending around the curves at the east end. Some of these will be mounted on two new signal bridges. Look for these to be opera-

by Alan Shifley

tional by Steam-Up 2015 if everything comes together.

Signal systems require a lot of wire. We are in need of more multi-conductor control cable. Belden 9444 cable or underground irrigation control cable are ideal, but just about any multi-conductor cable can be used.

If you can help with cable or are interested in learning more about the Willow Creek Railroad signal system, contact Alan Shifley at [alans@peak.org](mailto:alans@peak.org).

### Inside this issue:

Signal System Expansion	2
Pictures of Expanded Signal System	3
East End Signal System	4
Searchlight Signal Operation	5
<b>Memorial</b> Llew "Papa" Bird	<b>6</b>

## Spring is here...!!!!???

It has been a busy winter. The interior of the ICP is nearly finished. The kitchen cabinets and remaining light fixtures will be installed soon. The switch at the west end of the station has been cut into track one. This track

leads to the bay at the south end of the ICP. Tracks have been installed inside. This bay will provide storage for the work train cars a "ready train" that will be available to give rides on a short notice.



ICP Storage Track

## Signaling System Expanded



Signal bridge installed in 2013 allows control on the center track.



New signals installed at the bridge allow advanced warning.

## Signal System Expanded



Blocks added for new signals.



New control box.

Signaling functions will be controlled by a central area located in the south-west corner of the new ICP addition.

### East End Signal System Expanded

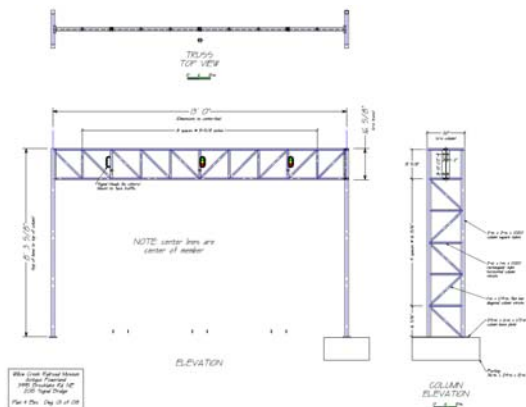


Alan installs signal controllers at the south end of the garden. (...a very wet and rainy day...)



Signal from the industrial loop to the main line track.

Chemeketa Community College welding class is scheduled to fabricate two new signal bridges for the east end tracks this spring term.



## Searchlight Signals

Searchlight Signal Information

[http://www.railroadsignals.us/signals/searchlights/#History\\_](http://www.railroadsignals.us/signals/searchlights/#History_)

In one "small" signal housing, you have the ability to produce (up to) three aspects.

The searchlight signal was "invented" by Thomas Hall in 1869, and was produced by the Hall Signal Company until 1925 when Hall was acquired by US&S.

The two searchlights were donated to us thanks to the efforts of Ralph Jachens . They came off the UP mainline when the signals were upgraded.

The Willow Creek searchlight signal near the loading area has been wired into the system and is functioning.

Alan has done extensive work this winter and the signaling system is all controlled by a master switch in the southwest corner of the ICP. It is no longer necessary to turn on separate sections of the signaling system at various locations,



March 2013



November 2013



September 2014



## Heavens Roundhouse: Llew "Papa" Bird

We received an email from Betty Bird that Llew "Papa" Bird recently passed away.

He had suffered a stroke last year and was also fighting dementia.

He really enjoyed his time at Willow Creek RR and was a big help in some of the electrical work done at the park. The engines he built were true Diesel Electrics.



The two engines will be for sale. If any one is interested they can contact [info@willowcreekrr.org](mailto:info@willowcreekrr.org)

