



Celebrating
Willow Creek's
41ST Year

1975 - 2016

Inside this issue:

New Roundhouse Progress 2

Roundhouse Continued 3

4th of July Events 4

Steam-Up @ Willow Creek 5

Info Bits 6

A Glimpse of History 7

The Willow Creek Gazette

Willow Creek Railroad Museum

Summer 2016

Steam-Up is almost here!!!

The Great Oregon Steam-Up is the largest event at Antique Powerland during the year and it involves all of the museums and many other participants. One of the unique aspects of the event is that most of the equipment is operating. We'll see you July 30-31 and August 6-7.

A parade takes place each day at 1:30 pm and it includes vintage tractors, trucks, and automobiles. The steam powered sawmill operates four times a day and the trolley tours the site perimeter all four days of the show.

Learn about the early machinery that made Oregon develop and grow. Hear about innovators and manufacturers of times past. Machines on display include farm tractors and implements, early engines, crawlers, fire apparatus, vintage trucks and cars, logging gear, an early Oregon flour mill, and an authentic steam sawmill. Rides include an historic trolley and a miniature railroad.

Scheduled activities: Train and trolley rides, BIG parade, steam sawmilling, traditional tractor pulling, machinery demos, threshing, flour

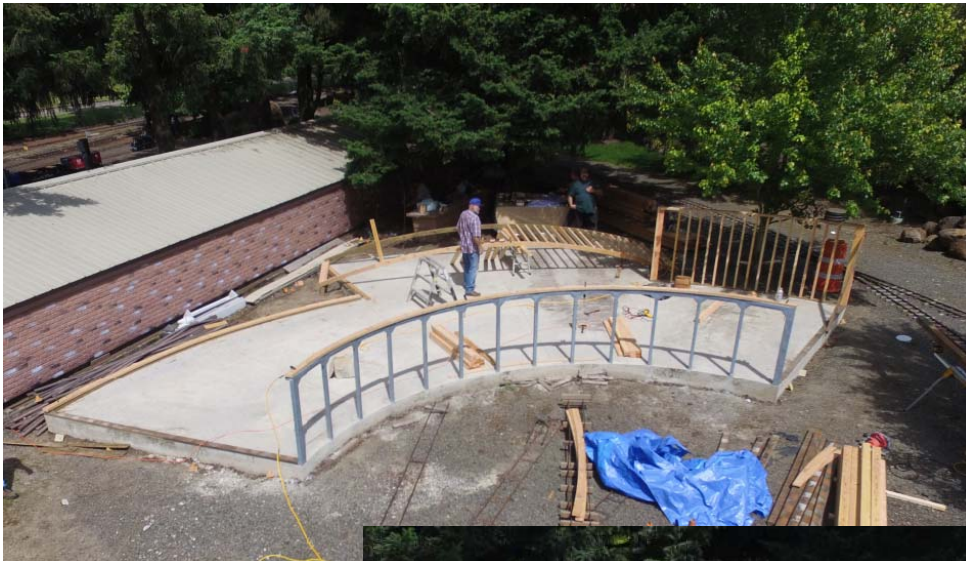
milling, fire apparatus demos, museum tours, kids pedal tractor pulling and a Youth Passport program.

Other Attractions: Blacksmithing, Brooks Depot Museum, a Country Store, models, early electricity exhibit, miniature farm display, Operation Lifesaver, swap meet and flea market sales, country music, and great food!

see more at:
<http://www.antiquepowerland.com/>



New Roundhouse Nearing Completion!



Curved walls being installed.

Walls completed and rafters installed. Starting roof sheathing.



Roof sheathing almost completed.

New Roundhouse Nearing Completion! (cont.)

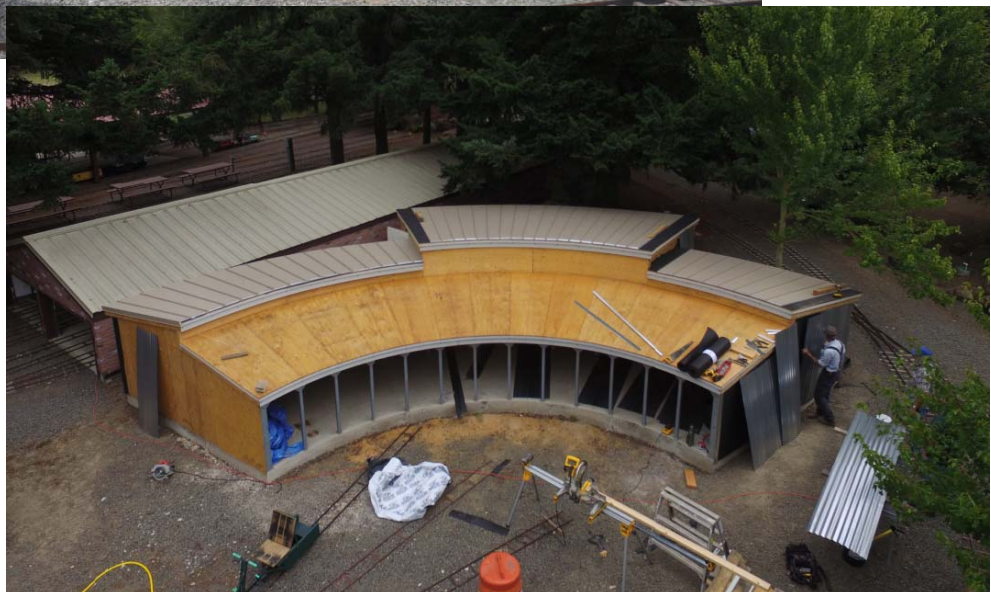
Metal siding intended for installation on a flat plane requires considerable effort on a curved wall to conceal the joint laps.



Riders enjoy the view of the construction.

A metal roof on a curved surface is a challenge!

A big Thank You to Mr. Phil L. and all those who have given considerable time to this project.



4th of July Events



TRAVEL BACK TO 1863 AND EXPERIENCE THE PEOPLE AND HISTORY OF THE AMERICAN CIVIL WAR

July 2-4, 2016
Antique Powerland
Salem, Oregon

CIVIL WAR REENACTMENT

Watch the battles, wander the camps and interact with the reenactors!

INFANTRY CAVALRY ARTILLERY CIVILIAN

...plus demonstrations, food/souvenir concessions and more!

Location: Antique Powerland in Salem, Oregon, just off I-5
Dates: Sat, Sun & Mon, July 2-4, Gates open at 8:00am
Admission: Adults: \$12; Kids under 12 FREE
For More Info: Visit us online at CivilWarOregon.com

NOTE: This event has moved from Willamette Mission State Park. Watch for the signs by the road and please help us spread the word. Thanks!

This event is put on by the Northwest Civil War Council (NCWC), a non-profit organization committed to helping people experience living history with hands-on, family events and educational opportunities.

Your entry fee includes admission to all of the museums & exhibits at Antique Powerland!

You too can shoot a cannon for a \$15 membership fee as did three of our younger members. The Northwest Civil War Council (NCWC) is a non-profit living history organization dedicated to educating the public and our members about the American Civil War. The NCWC is an umbrella organization that represents the reenacting units making up its membership.

All-American Vintage Trailer Rally

July 4th weekend, 2016
Brooks, Oregon

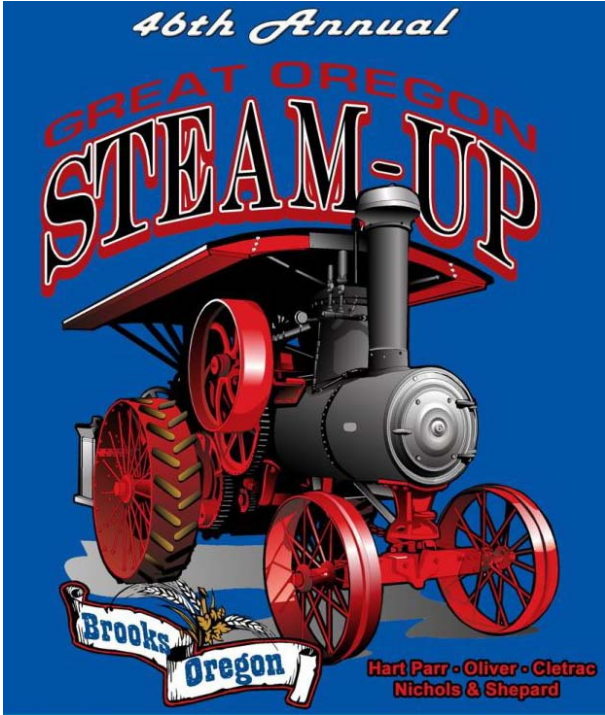
Sponsored by Rollin' Oldies Vintage Trailers (ROVT)

www.all-american-rally.com

Rollin'Oldies Vintage Trailer Club Rally: The Rollin' Oldies Vintage Trailer group is a loosely organized group of vintage trailer enthusiasts, based in Oregon. They have members throughout the Northwest. Vintage trailers are those considered to be those built before 1980, or those built later with the same design as the original vintage trailer. A repeat is scheduled for 2017.

2016 Antique Powerland Steam-up

Our biggest event of the year is rapidly approaching. It seems the preparation starts as soon as previous years event has completed. Of course the activity greatly increases in the preceding months.



Our signal system has been upgraded. Two new signal bridges have been added and new grade level signals provide additional warning. As an additional caution some signals never show green but display amber to remind you to be cautious. A flashing red indication has been added. See the revised Operating Rules for the 2016-2017 season.

Many of the old wooden ties have been upgraded with Trex ties. Thanks needs to be given to those who have labored hard to replace the old ties. Their efforts are appreciated.

“Thank You” to all those who have donated their time and efforts to improve our displays. And “Thank You” in advance to all who will come and provide the use of their equipment to give rides to our visitors. Remember this is one of our biggest fund raising events that will provide the money required for future improvements and operation.

You will see that Coyote Ridge has been modified. A new pond, creek and waterfall has been added. A garden scale model railroad has been installed adding a new view to our riders. Already, multiple generous donations have been received to help the layout grow. Although it is a “G-scale Railroad” it is only for display purposes. Any club member with G-Scale equipment is more than welcome to operate it on the layout and or donate any equipment, track, buildings etc... It will be running during steam-up for display to the public even though it's still under construction. As of now there is only an electric locomotive and

a few cars currently available. If anyone wants to bring more equipment to run during steam-up feel free to do so, the layout is able the run electric, battery, and live steam and can accommodate any size locomotive.



We will need volunteers to work in the booth. Amtrak has again donated tickets that we will raffle. 100% of the ticket sale raffle proceeds will go to Willow Creek.



As always there is track maintenance.



New Signals



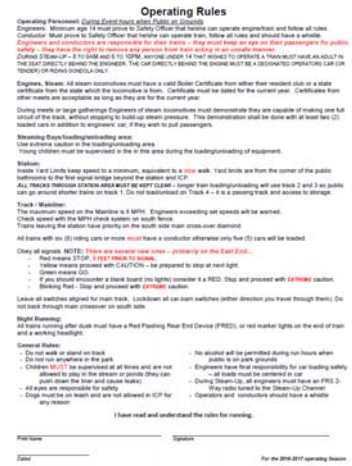
Coyote Ridge G-scale railroad, ponds and creek

Take Safety Seriously - Its everyone's responsibility.

Each year before we operate a train at steam-up we need to sign and date a copy of Willow Creek's Operating Rules. We also certify by our signature that we have read and understand them. Why is this important? One of the reasons is insurance. If we do not continue a safe operation we cannot maintain our insurance. Without adequate insurance we cannot operate.

Attend the morning safety meeting.

This year there were changes made to the rules. At steam-up, obtain, **read** and sign your copy of the Operating Rules. Return the signed copy to one of the club officers.



Steam-Up Group Dinner: Saturday August 6th

Last year the group dinner was a little different. Some food booth vendors remained open late and we purchased our dinner from them and enjoyed a meal with our friends at our tables. We are planning the same system for this year. Please join with us for the fellowship.

Also, we held a fund raising raffle during the dinner. We are planning for another raffle this year. If you have items to donate as raffle prizes, it would be greatly appreciated.

We hope to see you all there.



Jack Chapman Memorial Run: Saturday July 30th

Earlier this year we lost a true supporter of Willow Creek Railroad.

To honor Jack's memory the starting run the morning of the first day of Steam-Up will be dedicated to him. His train will travel the first circuit of the track. Everyone is invited to join us after the morning safety meeting and just before the first public run, for the memorial run.

Jack's dedication and donations to the railroad should be long remembered.



A Glimpse of History: SamTrak 2501

Ever wonder about the little engine stored on the trolley tracks west of Willow Creek RR?

<http://www.oregonpacificrr.com/locomotive2501.html>

Number 2501 is GE 25 tonner built in 1942 for the U.S. Army during World War II. Serial No. 15682. It's history after the war is a little unclear. It was purchased by Mr. Dick Samuels (Oregon Pacific Railroad) in 1992 at the Portland Docks Auction for \$2000. He originally did not have a purpose for the locomotive, but couldn't turn down such a good deal. It was then that he decided to try and start a public excursion on the East Portland line and SamTrak was born. This engine, 2501, operated until more cars were added and SamTrak was upgraded with a larger engine with more power, a 45-ton GE locomotive, 4501.

From Wikipedia:

SamTrak was a heritage railroad that operated in Oregon from 1993 to 2001. SamTrak was a passenger train operated by the Oregon Pacific Railroad, and named after the owner of the railroad, Mr. Samuels. The trains ran a 3.8 mile route from OMSI to the foot of S.E. 11th Avenue, with a stop at Oaks Amusement Park.

The little 2501 was donated to the Brooks Trolley Museum in 2005.

