



Celebrating
Willow Creek's
41ST Year

1975 - 2016

Inside this issue:

Jack Chapman 2
Memorial Run

Coyote Ridge 3
Revised

Visitors 4
Contribute

New Signs Added 5

Record Crowds 6
Attend

Bits & Pieces 7

Additional Bits 8

Powerland History 9

The Willow Creek Gazette

Willow Creek Railroad Museum

Special Edition: Steam-Up 2016

2016 Great Oregon Steam-Up is now History!



Guests enjoyed the hospitality of Willow Creek Railroad Museum.



Thank You to All Who Helped During Steam-Up

A great deal of preparation went into this years event. Hundreds of ties were replaced on the track. Many hours of work went into the landscaping and clean-up. Coyote Ridge had a model railroad installed and the new roundhouse had it's final county inspection.

Members and visitors brought their equipment to provide rides. Many came a long (and shorter) distances to our event and gave many hours of their time to make this an enjoyable event at the Great Oregon Steam-Up.

2016 had a record number of riders and donations. Thanks to all of you who contributed their equipment, time and/or effort!

Jack Chapman Memorial Run - first trip of 2016 Steam-UP



Bill Chapman piloted Jack's train on the first trip of the 2016 Great Oregon Steam-Up. Members of Jack's family joined with Bill on the memorial run. Jack's contributions to Willow Creek over the years will serve as a reminder of his service.

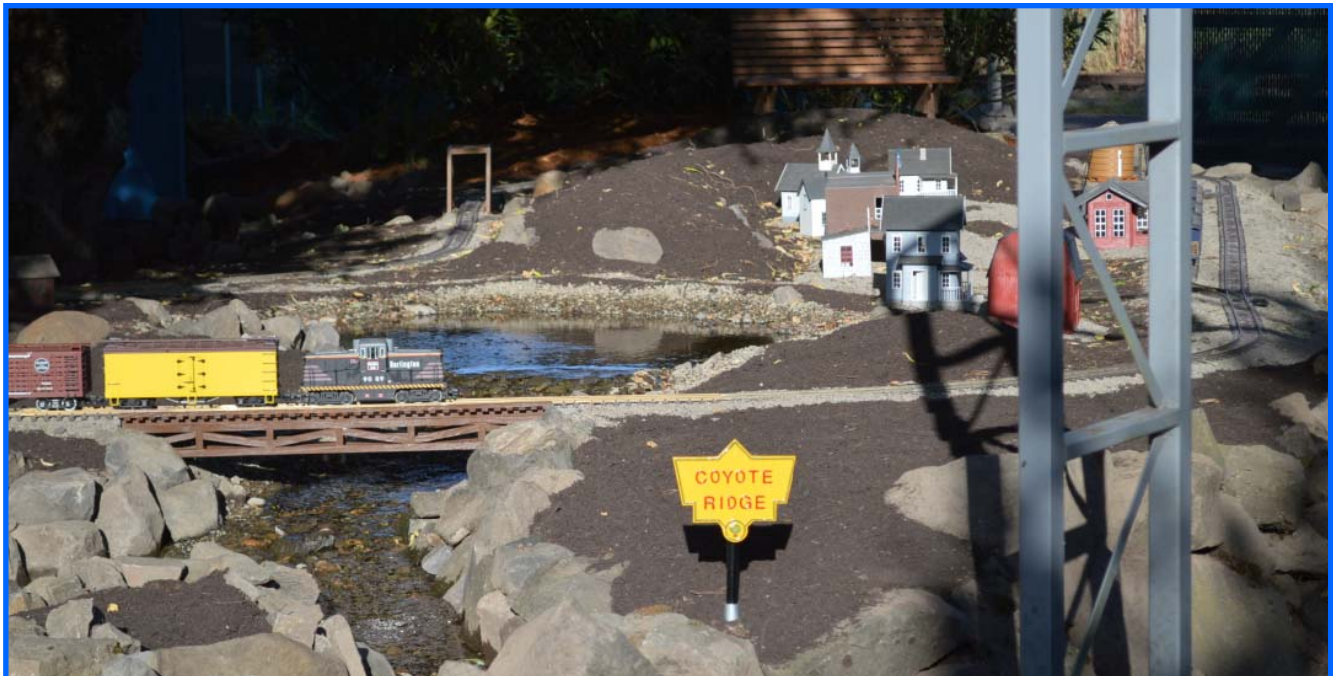
We did a double take on the first day when we saw the two "jacks" seen in the upper right picture. Thanks to Bill and Dave aka "Hornswoggel".



Coyote Ridge Garden Scale Railroad



The Hellman crew and friends have been busy modifying Hobo Lake and Coyote Ridge. The work includes a new upper lake with a connecting stream with waterfalls to Hobo Lake. A garden scale model road includes track, trestles and bridges. In addition WCRR members have contributed track and scale buildings. On the first weekend of steam-up, many visiting riders could be seen pointing to the new addition. Thank you to all who have contributed their labor and items for the display!



Visitors Contribute to Steam-Up Event



Peter Welch from Sacramento, California + Jim Welch & family on their Santa Fe



Art Rostek from Sidney, British Columbia on his Prairie Dog Express - Rail Systems EMD SW 1500 Switcher and Slug



Claude Jolivet from Sidney, British Columbia on his GWR 1400 Class 042T Sara J



Vancouver Island Model Engineers:
<http://www.vime.ca/home.php>

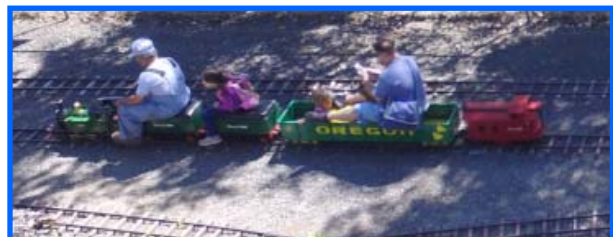
Our visitors have brought their equipment from great distances to participate at Willow Creek for the Great Oregon Steam-Up.



The variety provided for our riders is a big help.



Bob Richardson and Grandson Rob Alder on the 'Big Blue' GE Dash 8-40CM w/ Vancouver Island Model Engineers, generally known as VIME



New Signs Add to Willow Creek RR

You may have noticed the new signs added to Willow Creek this year.

Our friend, Claude Jolivet, from Canada contributed the cast aluminum signs with raised letters and the willow tree emblem.

Garry ("Pops") Johnson completed the signs with the detail paint on the raised letters and borders. Even the willow tree logo has been finely detailed.

The large station signs were a collaboration of the "Johnson Family", Garry enlisted help from son Jeremy, grandsons Damien and Trevor who did such a fine job with the hand work on the Station signs. All the paint was automotive paint mixed by Jeremy using hardeners and accelerators. With the exception of



the black all other detailing was done by masking and spraying to give them the finish they deserved.

Garry painted all the other signs by hand.

Garry says he still has many small signs yet to do. We can look forward to future sign additions.

Garry, your work is appreciated..

Large Steam-Up Crowds Generously Contribute to WCRR

Record numbers of visitors to the Great Oregon Steam-Up added to the number of rides given:

	Year	
	2016	2015
1 st Saturday	1419	1295
1 st Sunday	1371	1277
2 nd Saturday	1550	1246
2 nd Sunday	1422	1369



Donation\$ from generous riders will go a long way in meeting expenses and adding the ability to fund future projects. As always the donations are a result of the use of the equipment and labor of our members and visiting operators. Thank you all!!!

As usual, preparation for next year's event will proceed immediately....



Lifetime Memberships Awarded

In appreciation of their service to Willow Creek Railroad, lifetime memberships were awarded to Alan Shifley and Phil Lanzarotta at the Steam-Up dinner on Saturday, August 6th.



County's Final Inspection of New Roundhouse Approved.

Planning started early in 2010. Construction funds were raised. Construction drawings were started in 2011. The permit was issued and the foundation poured in 2014. The steel door frame was built in 2015. The framing, roofing and siding were completed this year.



Rail Car Donation

Bill Chapman has thoughtfully donated Jack's Container/Well Car to Willow Creek. This car will be used as a much needed engineer/operator car on the railroad. An invited guest may now ride behind the engineer if desired.



Winner of the Amtrak Ticket Drawing

Congratulations to Noel Meyer, Willow Creek member, who was fortunate to win the Amtrak ticket drawing. Proceeds of the ticket drawing sales have again been donated to Willow Creek.



Generous Donation to Willow Creek

In Memory of ARCHIE DEAN BRENNEMAN, August 31, 1919 - November 17, 2014

From Mr. Breneman's Estate, his niece Mrs. Marilyn Fiscus has again made an appreciated donation to Willow Creek Railroad Museum.

Mrs. Fiscus was close to tears when she visited us on Friday July 29th and saw the work that had been completed on the roundhouse.

Mr. Breneman one of people involved at the beginning of Antique Powerland. Most of his interest was with the Early Day Gas Engine Group. Garry remembers working with him on tractors long ago.

Shop @ Amazon.com

When you shop at amazon.com a donation will be made to Willow Creek Railroad.

<http://smile.amazon.com/ch/93-1225968>

this link will take you to the web site.



You shop. Amazon gives.

- Amazon will donate 0.5% of the price of your eligible AmazonSmile purchases to Willow Creek Railroad whenever you shop on AmazonSmile.
- You can select a different charitable organization after signing in.
- AmazonSmile is the same Amazon you know: Same products, same prices, same service.
- Support your charitable organization by starting your shopping at smile.amazon.com.

Questions? Learn more about AmazonSmile. Not interested? Shop Amazon.com. Represent a charitable organization? Visit org.amazon.com.

Sign In

Your email address or mobile phone number
 Your Amazon password
 Forgot your password?
 Sign in to Amazon! Create an account

The screenshot shows an email from AmazonSmile. The header says 'amazon smile Org Central'. The body of the email reads: 'Dear Charity Administrator, Your supporters are getting ready to send their kids back to school. Remind them to do their back-to-school shopping at smile.amazon.com and Amazon will donate to Willow Creek Railroad. Use the following message and link below in social media, email, and on your website to tell your supporters about how they can help Willow Creek Railroad when they shop for back-to-school supplies. Support us when you shop for back-to-school items. #StartWithASmile at http://smile.amazon.com/ch/93-1225968 and Amazon donates.' Below the text is a promotional banner for 'Back to School?' with a blue backpack and school supplies, and a 'Go to Org Central' button.

A Glimpse of History: Antique Powerland

Before Antique Powerland was established there was annual threshing bees held on farms in the Silverton and Woodburn areas. Each fall, local farmers would get together for a weekend to test “the mettle” of their farm tractors and show off heritage apparatus.

Antique Powerland was originally established by a group of enthusiasts dedicated to the preservation, restoration and operation of steam powered equipment, antique farm machinery and implements. Today, it encompasses an impressive collection of museums dedicated to preserving Oregon’s rich agricultural heritage.

The public was attracted to these events and attendance rapidly grew. To accommodate the growth, a 62 acre parcel of farm land was acquired in Brooks, Oregon. Western Antique Powerland, Inc. (WAPI) was born and its annual event became known as the “The Great Oregon Steam-Up”.

In the beginning, the Show was primarily steam apparatus, farm tractors, implements and stationary gas engines. Only a small portion of the property was used for the event, the remainder was being farmed. However change was destined to take place!

Willow Creek Railroad Museum began in 1975. Just two individuals initiated it with 600 feet of track in a farm field with no trees, green grass or buildings. In 1993 Willow Creek became an official organization and in 1997 received official Non-Profit status from the IRS and a long-term lease agreement with Antique Powerland. By the mid '90's, there was a approximately 2500 feet of track and included a small car-barn, roundhouse, bridges and a creek with green grass and landscaping. In 1998 planning was started which would more than double the track length. In 2001 the work was completed to over 5000 feet of track. This allowed larger live steam locomotives and provide more of a feeling of a prototypical railroad.

In 1988, when a site was needed for a proposed heritage truck museum in the Northwest, Powerland became the location of choice.

Oregon Electric Railway Historical Society followed in 1996, and the Antique Powerland Museum Association (APMA) of today was launched.

Participation by a diverse set of museums and heritage clubs has grown over the years to now include fifteen organizations with a wide range of interests. Included are activities related to a steam powered sawmill, blacksmithing, fire apparatus, electric railroads, miniature railroading, Caterpillar equipment, antique cars and motorcycles, early day trucks, large steam engines, steam operated cranes, logging and local history.

Powerland’s focus is on the operation of antique machinery and vehicles, accurately replicating their function and use. Through the equipment, Powerland displays and demonstrates life and work in the period of Oregon’s early growth and development. Frequently the restored equipment is that which was used in Oregon and the Pacific Northwest.

It was a time when steam ran the mills and generated electricity. Flywheel engines pumped water, operated bridges and powered industry, and the farm tractor mechanized agriculture. The car and truck joined the electric street car and steam train in bringing to Oregon mechanized transportation of both people and goods.

Powerland Predecessors

1954: Harvey Mikkelson hosted Silverton Oregon’s first old-fashioned threshing bee that year. The event was held annually.

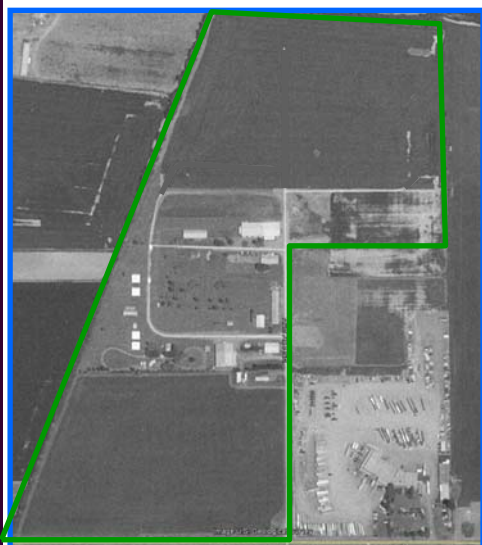
1960-1966: During these years, Harvey Mikkelson, Chris Busch, Rod Pitts and C.R. Miller hosted the annual steam reunions. The local police department helped with traffic control and the wives made large amounts of food to feed the workers and the public, too. Even the local power company helped, removing or stopping the electric meter for the event.

1966: The Mikkelson’s get-together as well as the other ones held by this time had become too much work for those involved. Access to the area was difficult, and the liability created by the large public crowd was too great.

1967-1968: The show was moved to Woodburn.

1969: The show was held in Gervis. In December of 1969, Western Antique Power Inc. (WAPI) was formed. The corporation leased 62 acres of land (with an option to buy) near Brooks and started erecting buildings on the site for future expositions. The corporation (and a few members of the Steam Fiends) purchased the land that is now Antique Powerland.

1970: The first show at the new site was staged in August. Rod Pitts named the event the Great Oregon Steam-Up. The steam-powered sawmill was the first building built and was working for the first show.



1994



2014