



The Willow Creek Gazette

Willow Creek Railroad Museum

Fall 2019

Inside this issue:

Signal System Update	2
Willow Creek Projects	3
Projects (continued)	4
Projects (continued)	5
2019 Hops & Vines	6
Metal Etching Process	7
Metal Etching (continued)	8
Riding Cars????	9
LCL Subjects	10
Glimpse of History Hat Badges	11

2019 Season Draws to a Close



Memories..... ?

Thank You! to everyone who contributed to our very successful and productive year.



Fall is Clean-Up Time!!!

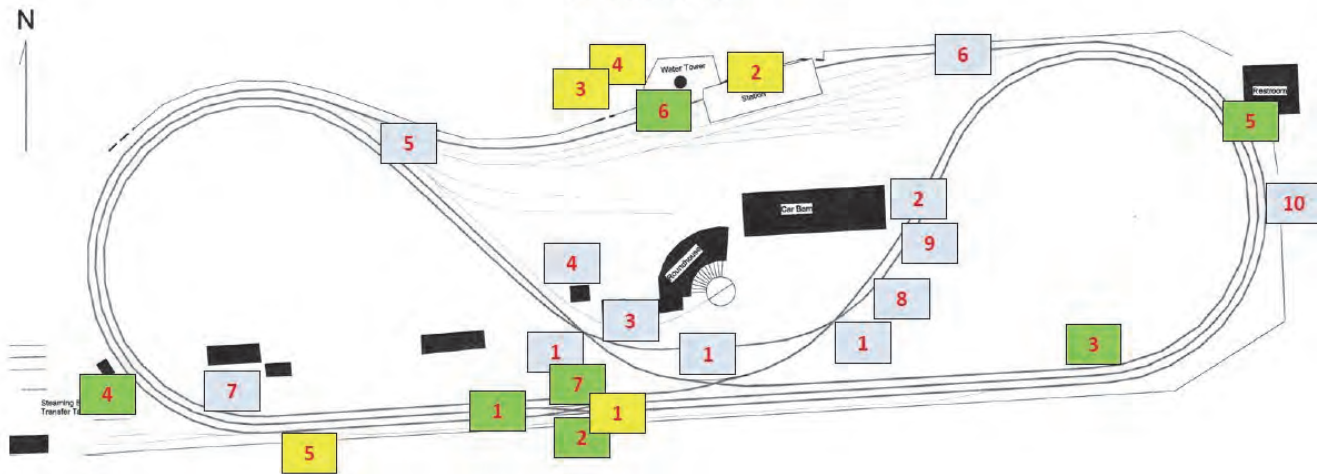
Hmmm.... That wonderful summer shade now reminds us of its price. The leaves are turning color and starting to fall. Soon the ground will be covered. We realize it is difficult to be ambitious when it is damp and dreary in Oregon's fall season. Still your help would be appreciated..... please?



Signal System Update

by Alan Shifley

Willow Creek Railroad Signal Projects October 2019



Completed 2018-2019

- 1 Double Crossover Signal Bridge
- 2 Double Crossover Controls & Motors
- 3 Industrial Lead Turnout Loop Redo
- 4 Steaming Bay Area Floodlights
- 5 Yard SLO Flashing Warning
- 6 Tunnel Siding Turnout Auto-Return
- 7 Johnson Siding Turnout Auto-Return

In Process

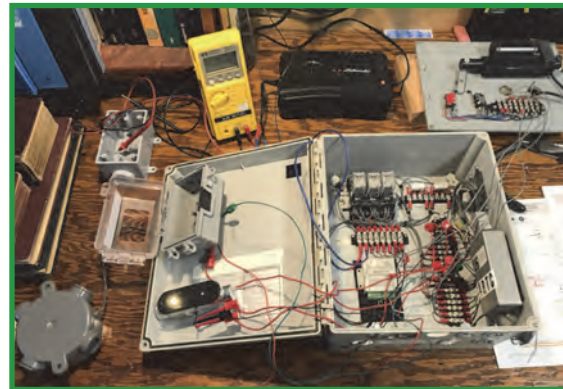
- 1 Double Crossover Loops Reliability
- 2 Station Sign and Clock Floodlights
- 3 ICP Front Floodlights
- 4 Wig Wag Signal
- 5 Loading Ramp Realignment

Future

- 1 3-Way Crossing Loops
- 2 Car Barn Crossing Signal
- 3 Roundhouse Lead-Occupied Signal
- 4 Roundhouse Lead Campers Xing Signal
- 5 Yard West End Turnout Motors
- 6 Yard East End Auto-Route
- 7 Digital Speedometer
- 8 Industrial Lead West End
- 9 Hot Box Axle Counter
- 10 Gateway Signals



August 31st: Tunnel Siding Auto-Return control installed.



Sept. 11th: After the success of the automatic-return turnout controller for the Tunnel turnout I have assembled and am testing the next one for the Johnson Siding turnout behind the Memorial Garden.

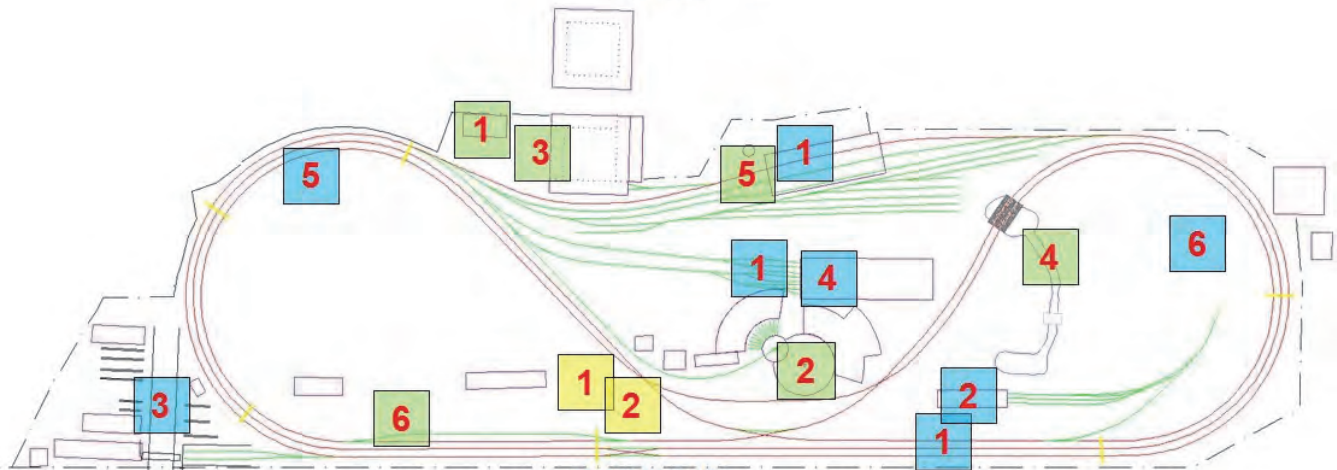


September 28th : Alan is shown here installing the Johnson turnout motor. The activation switch is mounted on a post approaching the turnout. Like the "X", the control switch must be held for three seconds to activate the turnout. The turnout is set to return to the to the normal position once the train has cleared. Indicator lights are mounted on the motor control box to show the position of the switch to approaching trains.

Thanks to Alan & Paul for their work on the turnout projects.

Willow Creek Work\$ for You

WILLOW CREEK PROJECTS Fall 2019



PROJECTS

PROPOSED

- 1 Track Rehabilitation
- 2 Car Barn Siding
- 3 Repair Air & Water Line
- 4 Straddle Car Design
- 5 Coyote Ridge Revision
- 6 Extend "Industrial" Loop

IN PROCESS

- 1 Container Cover
- 2 Turn Table
- 3 Outside TV Cabinet
- 4 Girder Bridge
- 5 Station Water Columns
- 6 New Storage Containers

COMPLETED

- 1 Repair Garden Walls
- 2 Rehabilitate Water Feature



September 28th: Phil completed construction of the turntable for the new roundhouse and delivered it to Willow Creek. The crew then moved it to the turntable hoist and put it in place.



Because of its size, a cart brought the turntable bridge inside.



Once inside, the tractor maneuvered the bridge. Note the improvised tractor counterweights.

Projects (continued)



The Steam Fiends Powerland sawmill provided the lumber which was used to construct the cover for the storage container west of the ICP. Chris framed the roof structure. Nate brought his service truck which lifted the large beam. A crew of helpers assisted in placing the beam that supports the cantilevered canopy section of the roof. This covered canopy will provide summer shade and an area to store tables & chairs. The container cover serves two purposes. Container roofs are not sloped to drain rain water. Standing water eventually deteriorates the roof metal. The containers are well sealed but summer sun creates excessive interior heating which can damage stored contents. Board & Bat siding will be added to minimize the visual impact and blend the structure with its surroundings.



The outdoor television on the west side of the ICP is being protected by a cover built by Ernie and crew. The equipment is now weather protected and does not have to be moved inside during the off season.



Roots from the nearby poplar tree had invaded the Memorial Garden water feature basin.



After the roots and rocks were removed, recycled crates were installed to increase the volume of stored water.



Clean rock was installed, water replaced and the pump is back in operation.

Projects (continued)



6



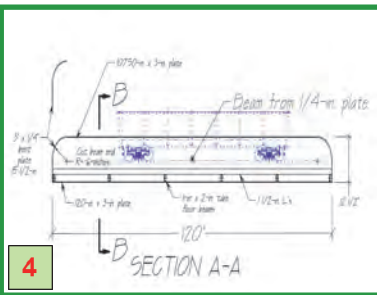
10/12/2019

October 11th: Two storage containers were delivered to Willow Creek. The forklift picked up the containers and placed them on the south side near the Johnson siding.



10/12/2019

A future roof will protect the containers and board siding will mask their industrial appearance and compliment the museum theme.



The girder bridge fabricated by the Chemeketa welding class is presently at Roy's to be powder coated. The bridge will be installed over Willow Creek as a part of the proposed Industrial Loop track.



1

The poplar trees next to the Memorial Garden walls tilted them. Ernie is shown here removing the stump roots under the wall. The wall was then moved back to the vertical position.

2019 Hops & Vines - September 21st



Willow Creek Museum participated in the 2nd annual Powerland Hops & Vines celebration. The Ratchet Brewery of Salem and Silverton provided two types of their beer for sampling.



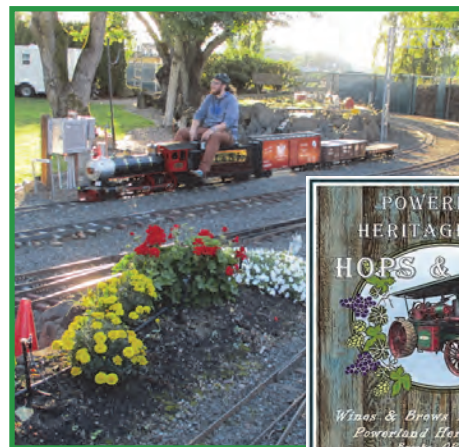
Trevor and Nate double headed their steamers to provide rides for the visitors.



Rumley assumes his position atop Nate's propane car for the ride.



Visitors take pictures as they enjoy their ride.



At the end of the day, the Ratchet Brewery server took a ride to see the Willow Creek layout.



Electro Metal Etching

by Frank Lertora

This is an electro-etching process I saw on YouTube. It will produce amazing results. The only limit is having vinyl graphics. In the example below I used a vinyl decal.

You will need a few basic items:

- White vinegar
- Salt
- Duct tape
- 12ga. Copper wire (for anode (+))
- Copper tubing (for cathode (-))
- Container to hold the item being etched
- 12 volt battery charger
- Vinyl graphic
- Duct tape

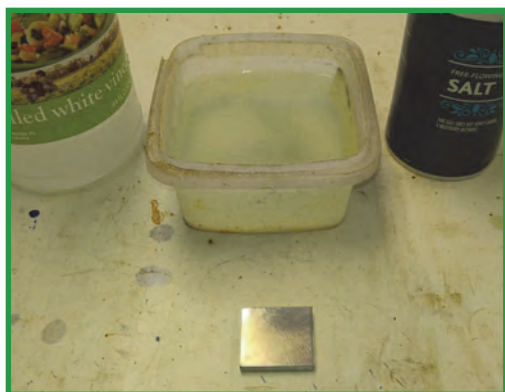


Photo shows the vinegar/salt solution in the soak container. I dissolved as much salt into the vinegar as would go into solution. You may end up with some un-dissolved salt on the bottom of the container.

I applied the vinyl graphic and duct tape .



I used 12ga. copper wire as the positive electrode. Photos show how I taped the wire on the back of the aluminum piece I am going to etch.

Once you have made sure to cover everything you do not want etched, the piece is now ready to go into the vinegar/salt solution



Electro Etching

by Frank Lertora



Photo shows the piece in the solution. Bend the copper wire so the piece sits flat, on the bottom of the container. Next, position the copper tubing so it is about a half of an inch above the item. Attach the negative to the tubing. You may need to get creative with clamps and bends. Make sure the copper tubing does not touch the item you are etching.



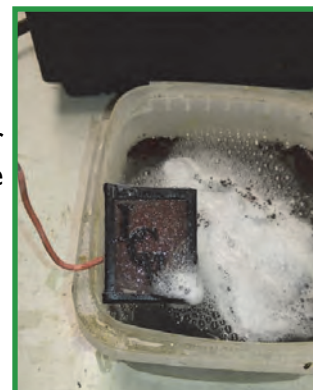
Now you can plug in the charger. It will start to bubble and fizz, Note the time. The longer you have the power turned, on the deeper the etching will be.

As time goes on, the salt/vinegar solution will become dark.



In this example, I etched for approximately 25 minutes. Unplug the charger and remove the item.

Then I just rinse it off under water and scrub with a brush.



Peel off the tape and vinyl.

Lastly, enjoy the marvels of science.

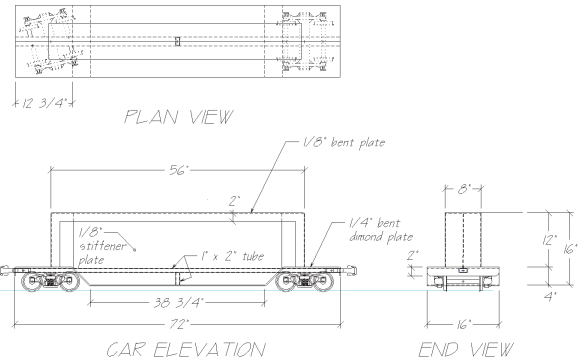


Editor's Note: The deeper the etch, the more the vinyl undercuts and the letters get thinner.



Riding Car Proposal??

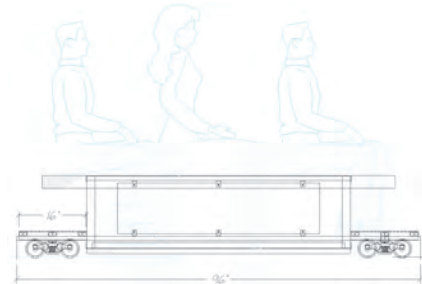
More 7 1/2 inch gauge railroads are switching to “straddle cars” to carry riders. Since it’s beginning, Willow Creek RR has used gondola cars (gons) to carry riders. We do have access to a limited number of straddle cars, but the “gons” are our primary passenger carriers. The gons have worked but they are difficult to use for seating for some passengers. If not properly loaded the cars can derail. The Board of Directors has recently discussed the use of straddle cars as an option for passengers. We are seeking comments and suggestions for the design of such cars. The illustration at the right is one suggestion.



This picture shows the type of car used by the Vancouver Island Model Engineers. (VIME)

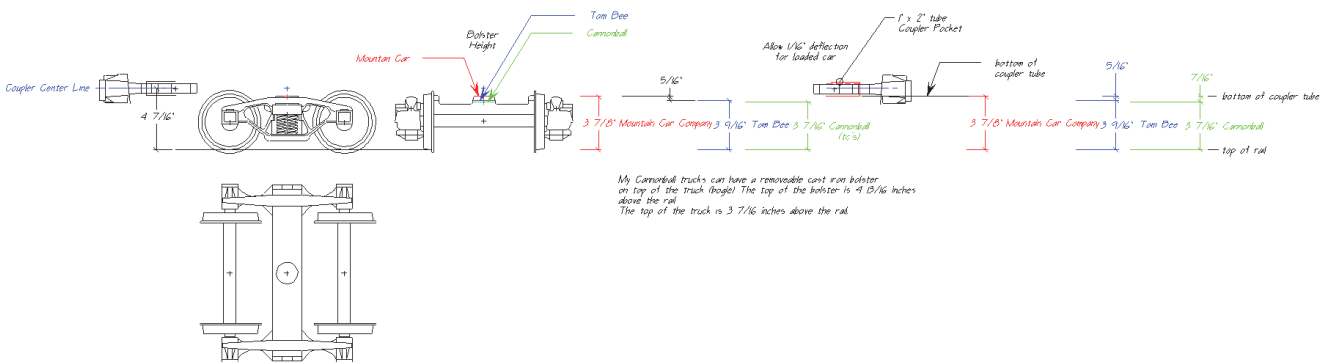


RMI offers this car for \$2,795 (in quantizes of 6 or more for \$2,200) 20" wide and 96 inches long



An earlier plan idea inspired by the photo found on the internet.

One of the design issues is the variation of truck bolster height. The editor has found some limited information on this as illustrated below. The car design should achieve the coupler center height as illustrated. Any information the reader may provide as to bolster height for different truck manufactures would be appreciated. The use of any existing trucks for new cars would result in significant cost savings.



Help and comments on this idea will be appreciated. Sketches and photos are a great help.

PRPA Requests Volunteers

Greetings Scott and Willow Creek, I am contacting you to ask if you could put the word out that we are looking for volunteers for our operations of the Holiday Express, the last weekend of November and first two weekends of December this year. The Holiday Express is the major fundraiser for the Oregon Rail Heritage Center. We are contacting the Rail related organizations in the area to ask for help. We need volunteers for the many tasks involved, Parking attendants, greeters, car hosts, ticket takers and even Santa. It can be rewarding seeing the happy children and adults during sometimes crummy weather that time of year. And you can also be rewarded by a ride or two on the train pulled this year by the 4449. If anyone is interested in volunteering, have them check www.orhf.org/volunteer or meanljm@comcast.net . Thanks for your time. Jim Vanderbeck PRPA

Searchlight Signal Donated to Willow Creek RR Museum



Mark, Trevor and Scott traveled to Banks to pick up a searchlight signal donated to Willow Creek. Dick Hofsheier uses his tractor to load the signal head on the trailer. Our museum appreciates the historical donation.



APMA Annual Meeting

Saturday, November 16, 2019 - 10 am

At the Pacific Northwest Truck Museum

Join us for a morning of information, fun and raffles

A potluck will follow immediately after the meeting. APMA will provide the main dish and beverages.

A Glimpse of History: Hat Badges

In the 1880s, United States railroads started to require that every employee wore a uniform, which would be topped off by a hat with a badge. At that point, rail lines stretched across the United States, and many different types of employees were necessary to keep the trains running. As passengers traveled cross-country, they needed a way to quickly identify railroad employees and what those employees did. Cap badges identified a railroad worker by his specific occupation, such as engineer, porter, conductor, gateman, station agent, ticket agent, information clerk, or time clerk.



← Riker boxes provide a simple way to display items that have variable shapes.