



The Willow Creek Gazette

Celebrating Willow Creek's 46TH Year 1975 - 2021

Willow Creek Railroad Museum

Winter 2021

Winter: Hard Times ~ February 13, 2021

Photos by Nate Degerstedt

A day that will live in infamy. Mother Nature struck hard on Willow Creek. Many cleanup days to follow.....

Inside this issue:

- Storm Cleanup 2
- ...More Cleanup... 3
- ... Cleanup! 4
- Carbarn Track 5
- Bits & Pieces 6
- Signal Projects 7
- Glimpse of History BRC 8



Holiday Sparkles

Photos by Nate



Mother Nature must have liked Powerland's Holiday Sparkles and decided to do her own version on the station. Unfortunately the rest of the "ice job" did more harm than good!



Storm Cleanup

The February ice storm left lots of damage in its wake. Many weekends have been used in restoring the Willow Creek site. Some work remains.



Cleanup - continued ...



Cleanup - and more!



Some cleanup involved disposing of the limb debris from the tree pruning from last fall.



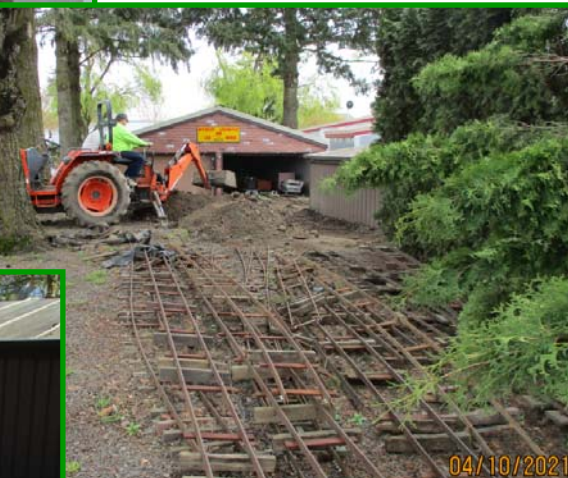
Of course, some work involves removal of weeds that take advantage our focus on storm damage.



Carbarn Lead Track Restoration



The water line replacement last fall required removal of the carbarn lead tracks. Now is the time to upgrade with hump removal and new ties.



The approach grade has been leveled. Finally it's time to reconfigure the stockpile of track to restore order.

Note the wide grading bucket that Ernie fabricated for the tractor backhoe.

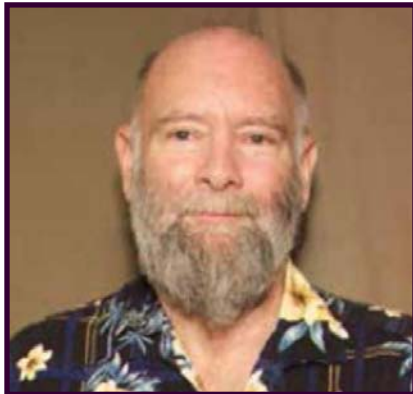
EZGo Upgrade



This winter Jeremy Johnson upgraded the EZGo with a new windshield, reinforced cab supports, tailgate and dump box extensions. He also upgraded the trailer with floor and side extensions with brackets for rake storage.

In Memoriam: Vern Gumbert

January 2021



Vern will be remembered for his diesel powered engine and consist of riding cars. Vern also participated for many years with the lighted Christmas ships in Portland. He also contributed to the assistance of several Willow Creek members.

Donation\$

Remember you can contribute indirectly via your Fred Meyer and Amazon purchase\$... Sign up for their donation program\$. No additional co\$t to you and benefit\$ to Willow Creek.

Al\$o remember your can\$ and bottle\$ have made \$ignificant contributon\$ to Willow Creek.

Keep Willow Creek Green

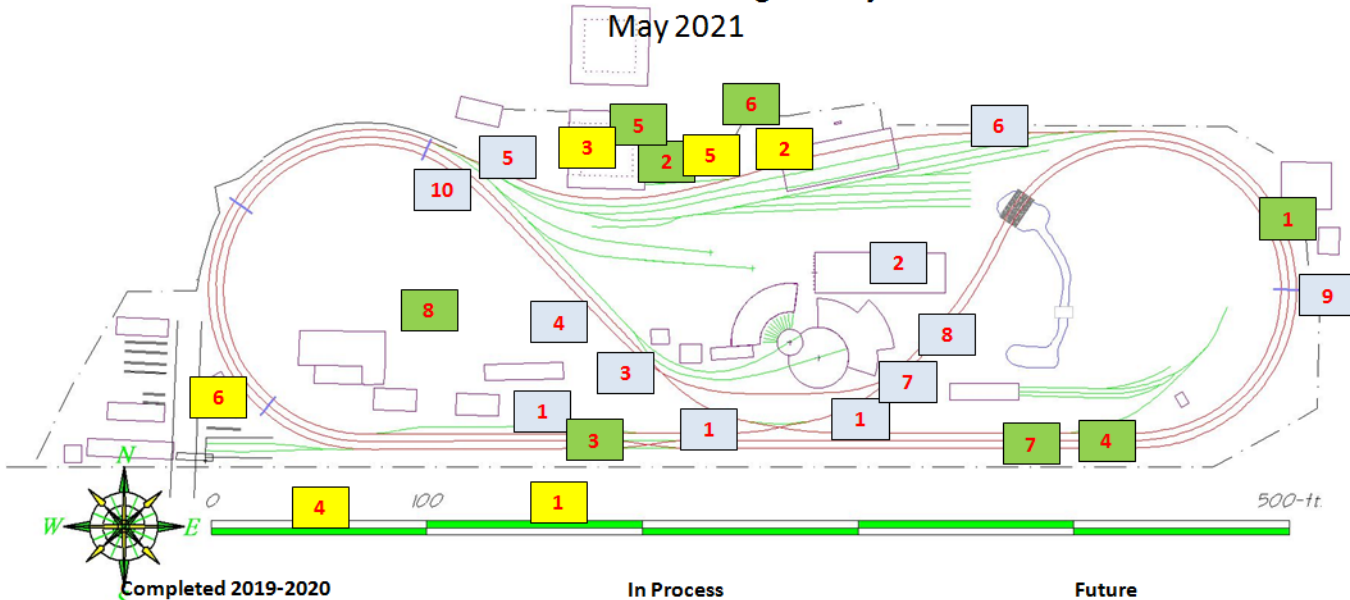
THANK\$

Signals

By Alan Shifley

Willow Creek Railroad Signal Projects

May 2021



Completed 2019-2020

- 1 Yard SLO Flashing Warning
- 2 Tunnel Siding Turnout Auto-Return
- 3 Johnson Siding Turnout Auto-Return
- 4 Industrial Lead East Delayed Auto-Return
- 5 Wig Wag Signal
- 6 Station Semaphore
- 7 Test WKV Turnout Motor
- 8 Change Party Switch to Timeout

In Process

- 1 Double Crossover Loops Reliability
- 2 Station Sign and Clock Floodlights
- 3 ICP Front Floodlights
- 4 Loading Ramp Realignment
- 5 Tunnel Turnout Loop Reliability
- 6 Digital Speedometer

Future

- 1 3-Way Crossing Upgrade
- 2 Car Barn Crossing Signal
- 3 Roundhouse Lead-Occupied Signal
- 4 Roundhouse Lead Campers Xing Signal
- 5 Yard West End Turnout Motors
- 6 Yard East End Auto-Route
- 7 Industrial Lead West Auto-Return T.O.
- 8 Hot Box Axle Counter
- 9 Gateway Signals
- 10 ICP Patio-to-Pond Crossing Signal

Projects In Process

- 1 Improve the reliability of the Double Crossover loops. Proper operation of these loops is critical to the operation of the Double Crossover. Bypass switches have been installed on the middle and trailing loops as a means of continuing train operations in case of loop failure. Experimenting with different loop configurations and lead wires to determine best reliability.
- 2 Station Sign and Clock Floodlights: Add low-power floodlights to the signs at the end of the station and both sides of the station clock.
- 3 ICP Front Floodlights: Add two low-power floodlights to highlight the signs on the front of the ICP. Mount the floodlights at or near the top of the wig-wag signal.
- 4 Loading Ramp Realignment: Move and/or remove signals, track circuits and detector loops as necessary to accommodate the project to rebuild the loading ramp.
- 5 Improve the reliability of the Tunnel Turnout loop: Eliminate false detections that seem to occur primarily when temperatures reach the 90's.
- 6 Digital Speedometer: Install loop detectors to measure speed and a digital readout facing east on the southwest signal bridge.

A Glimpse of History: Brotherhood of Railroad Carmen

One of the lesser known railroad jobs. Sometimes a dirty job but it has to be done. The Brotherhood Railway Carmen was founded at Cedar Rapids, Iowa on October 27, 1888 by railroad employees engaged in the repair and inspection of railroad cars. Workers in the industry frequently suffered from low pay, long hours of labor, job insecurity, and dangerous working conditions.

